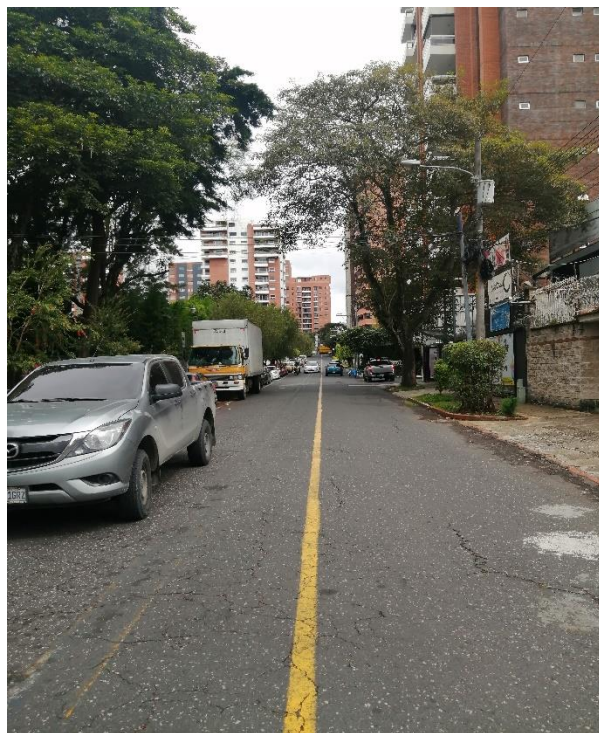


ACTIVO EXTRAORDINARIO U-885

Apto. 9B Renior en el 9º. Nivel, estacionamientos 307, 308 y 327. Bodega No. 322 en Sótano 3 del Edificio Vía Rishó, ubicado en la 2ª. Avenida 14-96 Zona 14, Guatemala.

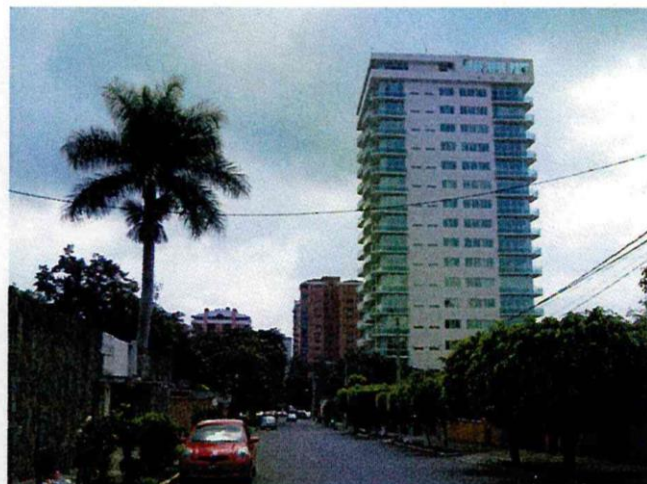


7ª. Avenida 22-77, Zona 1, Guatemala. Tercer nivel.

PBX: 1507 EXT. 0332 Teléfono directo: 2290-7081 WhatsApp: 5195-0314
<https://www.chn.com.gt/activos-extraordinarios/> / bienes.activos@chn.com.gt



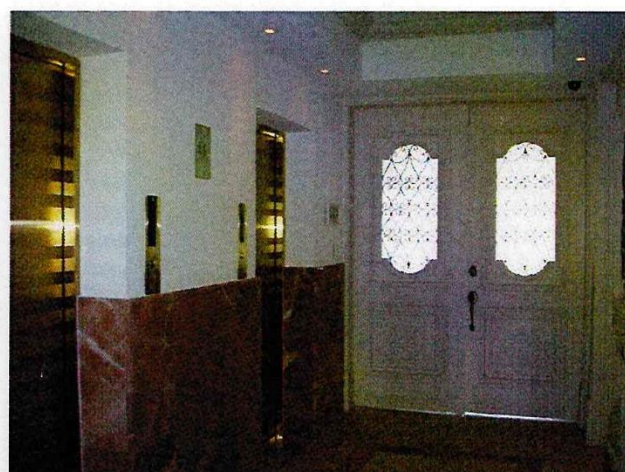
01- Sector



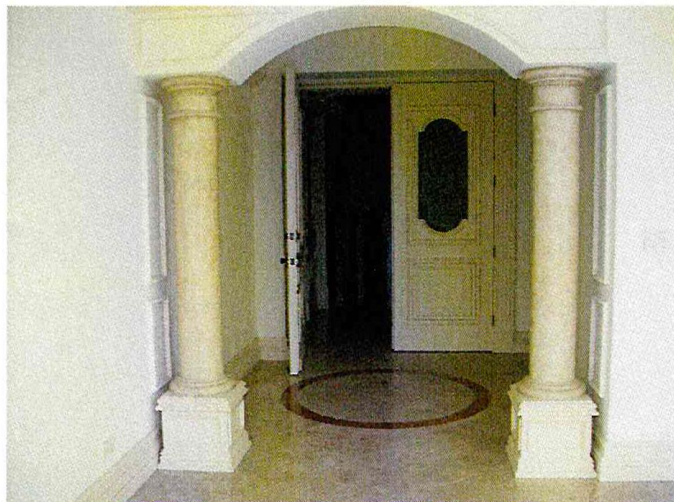
02- Sector y Vista General



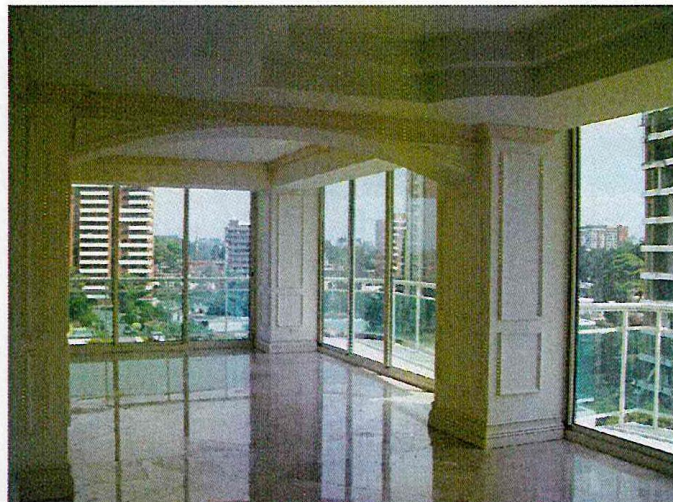
03- Ingreso



04- Ingreso Apto 9B



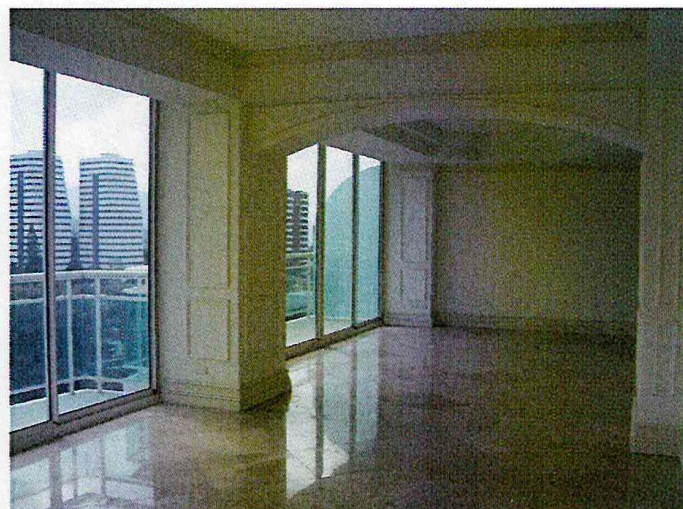
05- Vestibulo



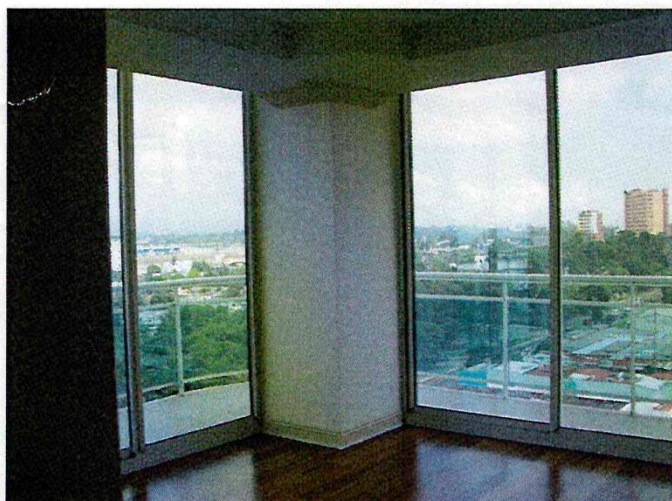
06- Interior area social



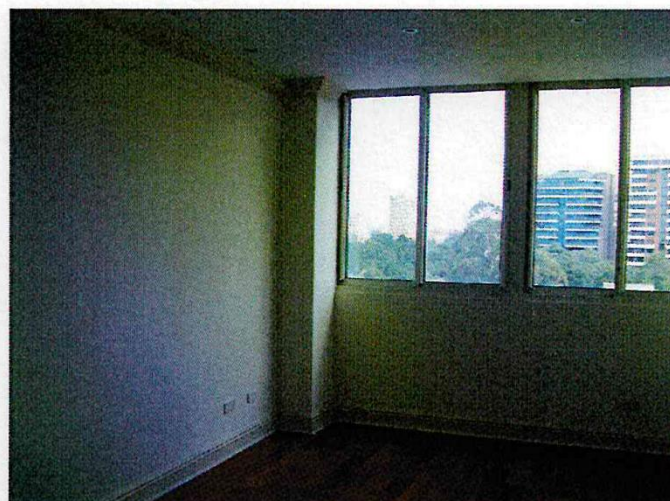
07- Area social



08- Interior area social



09- Interior dormitorio



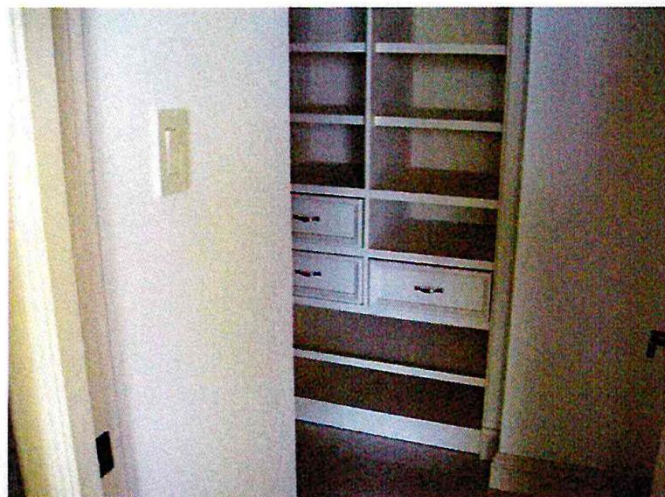
10- Interior



11- Interior dormitorio y closets



12- Interior



13- Walk-in-Closet



14- Baño principal



15- Baño principal



16- baño principal